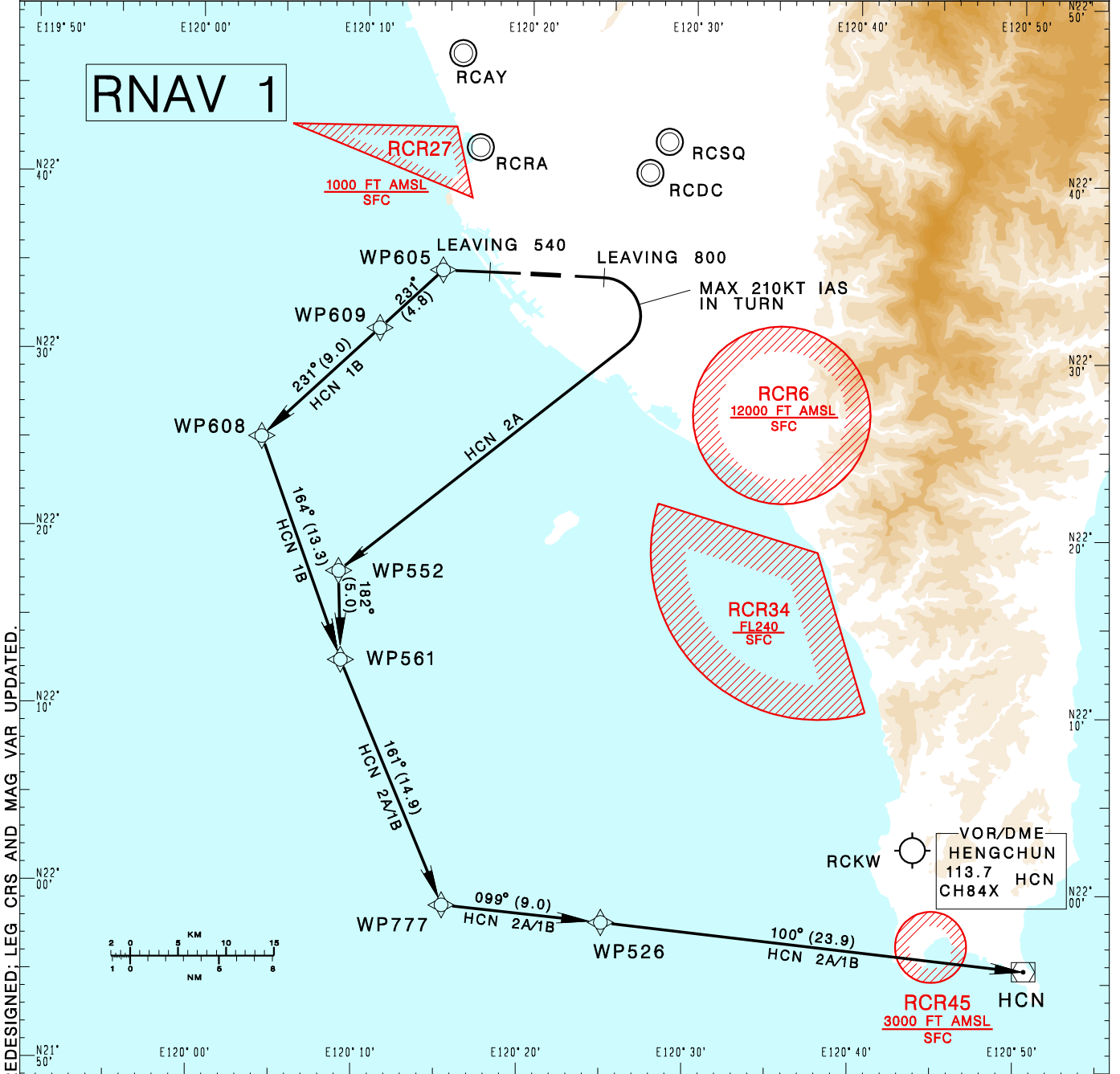


高雄國際機場
KAOHSIUNG INTL AD

HCN 2A RCKH SID
HCN 1B RNAV(RWY09)
RNAV(RWY27)

| | | | | | |
|--|------------------------------|--------------------|---------------------|--|--------------------|
| KAOHSIUNG APP 124.7 125.7 | KAOHSIUNG TWR 118.7 120.7 | ATIS 127.8 | VAR 4° W - 2023 | | |
| Apt Elev: 32' | | Trans Level: FL130 | | | Trans Alt: 11,000' |
| BEARINGS ARE MAGNETIC; DISTANCES ARE NAUTICAL MILES; ELEVATIONS, HEIGHTS IN FEET | | | | | |



CHANGES: LEG BEFORE WP552 REDESIGNED: LEG CRS AND MAG VAR UPDATED.

HENGCHUN TWO ALFA RNAV DEPARTURE
Climb on RWY HDG until 800ft, then turn right direct to WP552, then to WP561, WP777, WP526, HCN.
Cross WP552 at or below 7,000ft.

HENGCHUN ONE BRAVO RNAV DEPARTURE
Climb on RWY HDG until 540ft, then direct to WP605, then to WP609, WP608, WP561, WP777, WP526, HCN.
Cross WP609 at or below 8,000ft, cross WP561 at or below 9,000ft.

- NOTE**
- HCN 2A:
Minimum climb gradient required: 6.0%(365 ft/NM) until 2,000ft.
Speed restriction of 210KT IAS maximum until established on track to WP552.
 - Caution: pier cranes, terrain and stacks east, west and south of the airport.
 - ATS surveillance required.